

1.Remove the OEM chip(see the figure a),peel off the yellow film, remove the holder(see the figure b), then slide the chip onto the chip slot of corresponding new ink tank in the direction of the arrow(see the figure c),finally install the ink cartridge.

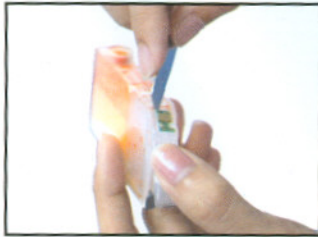


fig a



fig b

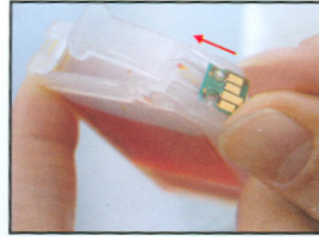
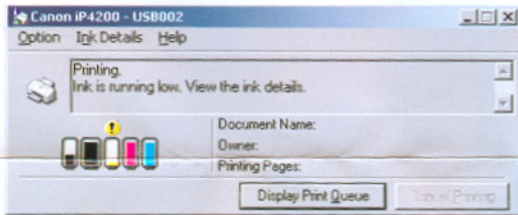


fig c



picture 1



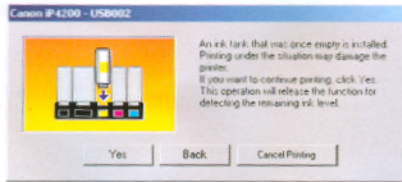
picture 2

2.A dialog box will pop up, if the dialog box likes shown in picture 1, please go on printing till another dialog box appears(as shown in picture 2);

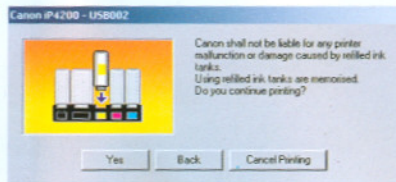
If a dialog box appears as shown in picture 2 directly, Press the "OK" button to continue, which may be followed by two alternative dialog boxes: one is the reappearing of dialog box in picture 1, please repeat the steps as mentioned above; the other is a dialog box shown in picture 3, please operate according to the following instructions:

3.Click "Yes" after seeing the dialog box. (See picture 3)

4.Click"Yes" after seeing the dialog box (See picture 4)



picture 3



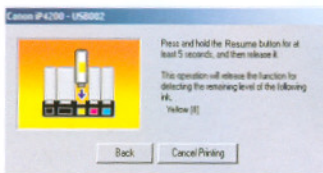
picture 4

5.Click "Ok" after seeing the dialog box. (See picture 5)



picture 5

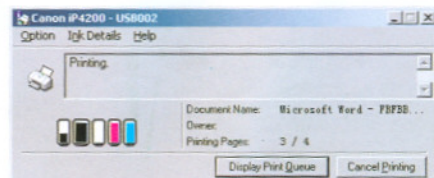
6.Do not click "Back" or "Cancel printing", **press and hold down the paper feed button for five seconds** for some printer models,if no paper feed button exists,press the Stop/Reset button and then release the button. A dialog box will be appeared (See picture 7). In case a dialog box like picture 6 prompts, please re-operate by pressing the paper feed button (or Stop/Reset button) till the dialog box (picture 7) appears again.



picture 6



fig d



picture 7